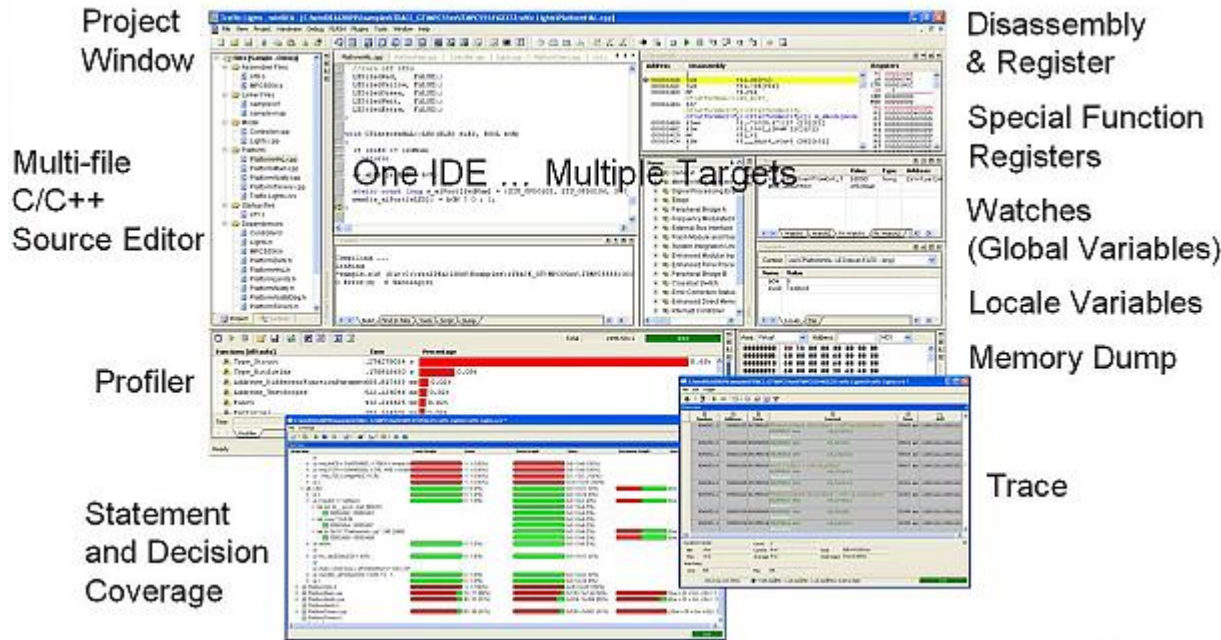


winIDEA Integrated Development Environment (IDE and Debugger)



Standard Debug Functionality

- Run control: Single Step, Run Until, ...
- JTAG/BDM Flash Programming, Monitor Flash Programming
- Memory window
- Real-time Access, Call Stack
- Special Function Registers
- HLL Debugging C/C++
- Disassembly Window
- Variable-, Watch-Window
- Software Breakpoints Flash
- Software Breakpoints RAM
- Hardware Breakpoints
- Script Language (e.g., Python)
- Open & Public API
- Plug-in Interface
- ...

All our hardware tools are controlled by a single IDE which integrates all aspects of the development cycle – a text editor, a project build manager, debug and trace tools. In addition to this, performance test and coverage test functionality is provided. Beside supporting Microsoft Windows platforms (Vista, XP SP2, 2000 SP4, NT 4.0 SP3), iSYSTEM also supports Eclipse.